

LEGEND : (Electrical & Fire Alarm System)

S. No.	SYMBOL	DESCRIPTION	POSITION
39.	[Symbol]	MANUAL CALL POINT (BREAK GLASS TYPE)	1050
40.	[Symbol]	TALK BACK UNIT	1200
41.	[Symbol]	ELECTRONIC HOOTER / SPEAKER	2250
42.	[Symbol]	OPTICAL TYPE SMOKE DETECTOR	
43.	[Symbol]	RESPONSE INDICATOR	2250
44.	[Symbol]	INDICATIVE CONDUIT (25Ø) RUN FOR FIRE ALARM SYSTEM	
45.	[Symbol]	A/C INDOOR UNIT	
46.	[Symbol]	A/C OUTDOOR UNIT	
47.	[Symbol]	FREEDOM / DISPLAY UNIT	
48.	[Symbol]	EMERGENCY LIGHT POINT INDICATION	
49.	[Symbol]	EXIT SIGNS (SELF ILLUMINATED / AUTO GLOW)	
50.	[Symbol]	INDICATIVE CONDUIT RUN FOR SUBMAIN	
51.	[Symbol]	INDICATIVE 25Ø CONDUIT RUN FOR POWER / A.C. CIRCUIT	
52.	[Symbol]	INDICATIVE 25Ø CONDUIT RUN FOR LIGHT / FAN CIRCUIT	
53.	[Symbol]	INDICATIVE CONDUIT RUN TELEPHONE / T.V. SYSTEM (FROM LV SHAFT TO FLAT) (25Ø)	
54.	[Symbol]	INDICATIVE 25Ø CONDUIT RUN FOR TELEPHONE / T.V. SYSTEM (IN SIDE FLAT)	
55.	[Symbol]	WATER PURIFIER	

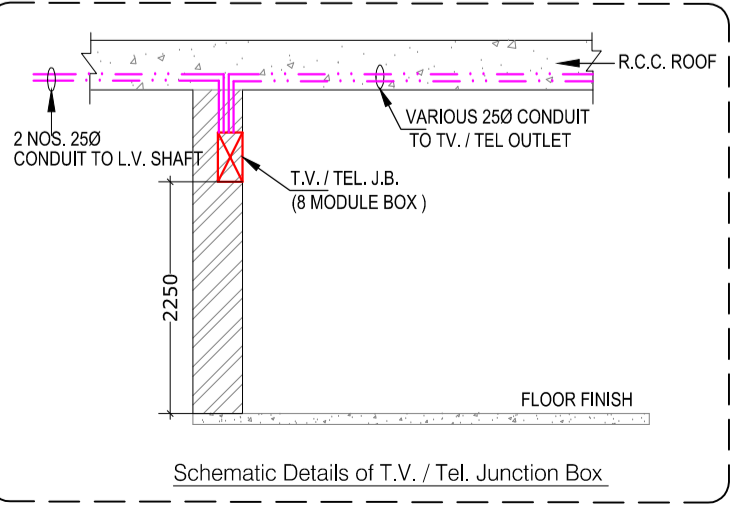
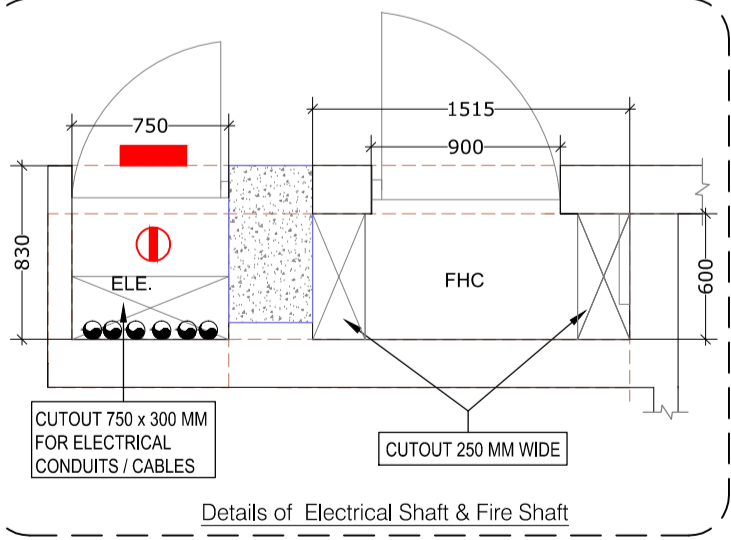
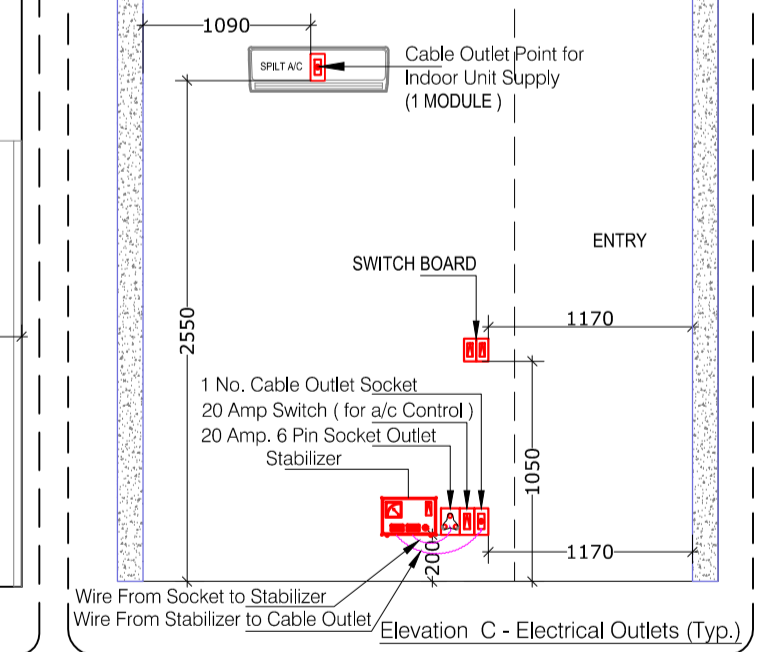
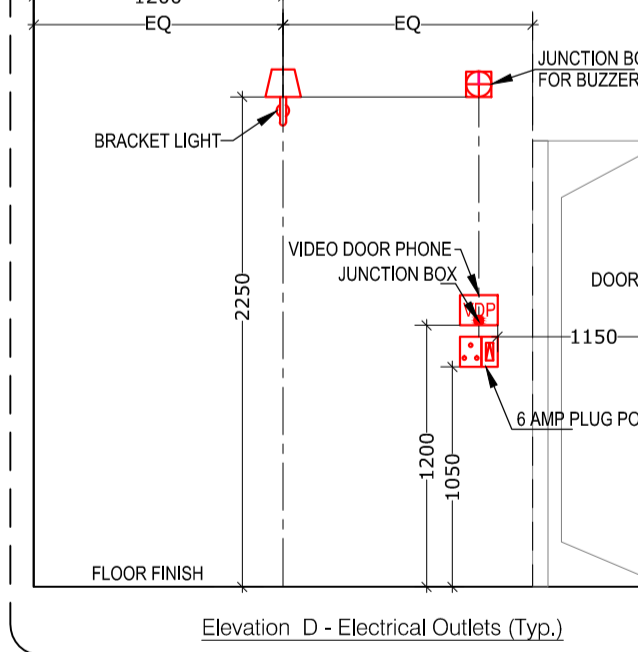
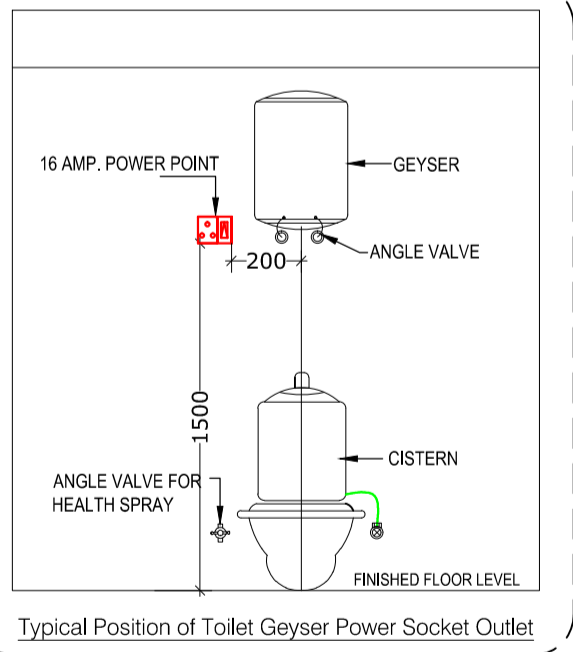
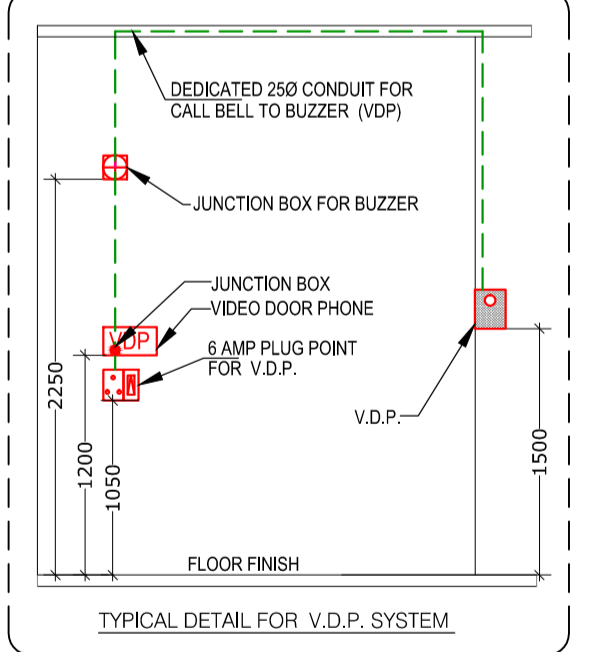
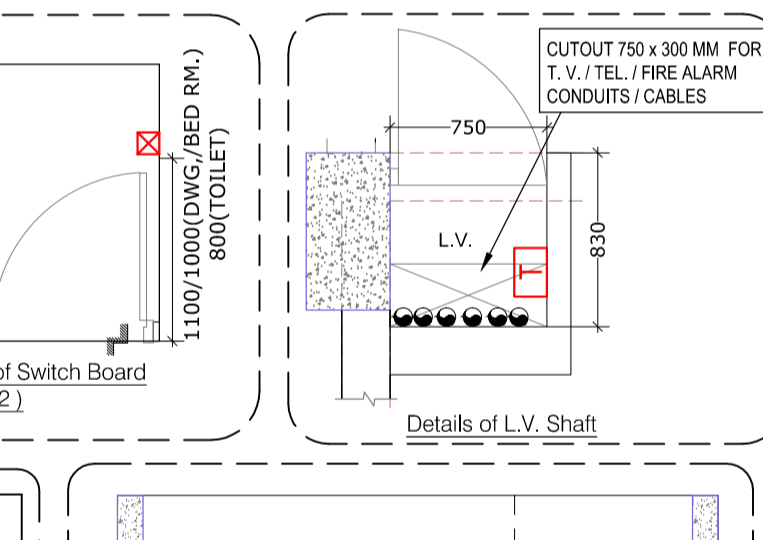
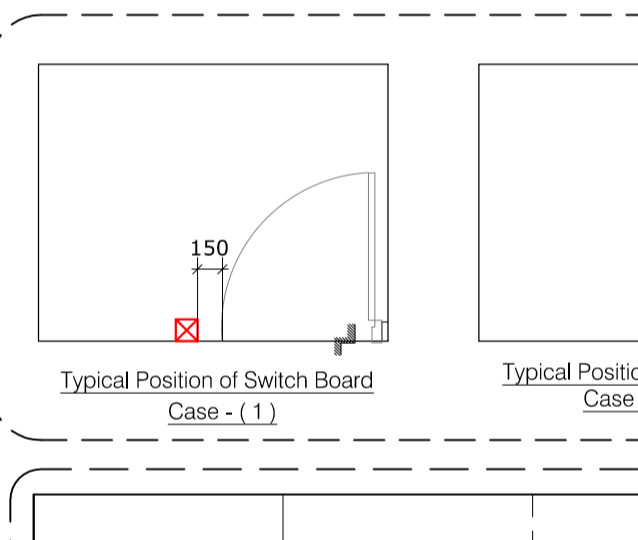
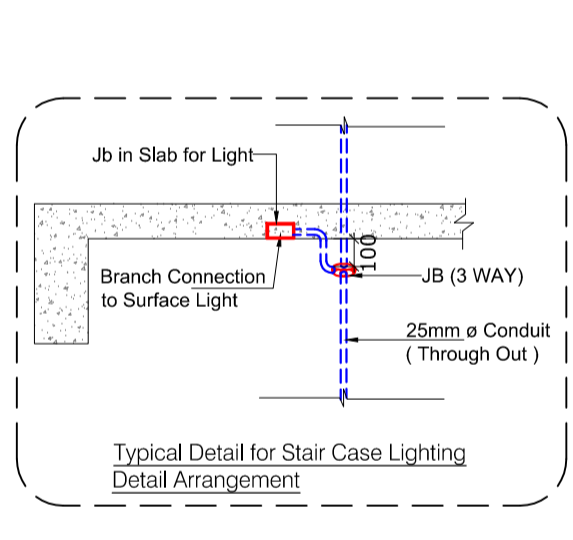
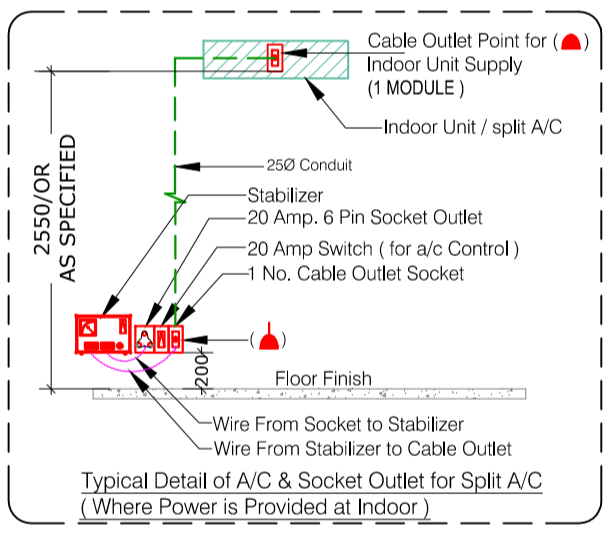
LEGEND : (Electrical System)

S. No.	SYMBOL	DESCRIPTION	POSITION
1.	[Symbol]	LIGHT POINT/ WALL BRACKET	2250
2.	[Symbol]	LIGHT POINT/ WALL BRACKET (FOR TOILET)	2250
3.	[Symbol]	CEILING LIGHT (SURFACE)	
4.	[Symbol]	CORRIDOR / STAIR CASE LED LIGHT	
5.	[Symbol]	CEILING LIGHT (RECESS)	
6.	[Symbol]	MIRROR LIGHT	2000
7.	[Symbol]	CHANDLER	
8.	[Symbol]	CEILING FAN	
9.	[Symbol]	EXHAUST FAN / CEILING ROSE	2000
10.	[Symbol]	WALL MOUNTING REVOLVING FAN	2250
11.	[Symbol]	6 AMP PLUG POINT	200
12.	[Symbol]	6 AMP PLUG POINT (BED SIDE)	550
13.	[Symbol]	2 NOS 6 AMP PLUG POINT FOR SET TOP BOX / DVD 1 NO. SWITCH FOR (T.V.) 2 NOS AV/TV OUTLET FOR SET TOP BOX / DVD 1 NO. 6 AMP SOCKET FOR (T.V.) & 1 NO. TV OUTLET POINT	550
14.	[Symbol]	6 AMP PLUG POINT	1050
15.	[Symbol]	6 AMP SOCKET OUTLET (FOR CHIMNEY) (SWITCH WILL BE IN MAIN BOARD)	2250
16.	[Symbol]	6 AMP SOCKET OUTLET (FOR GAS BURNER) BELOW COUNTER (SWITCH AT MAIN BOARD)	550
17.	[Symbol]	6 AMP PLUG POINT	2250
18.	[Symbol]	6/16 AMP POWER POINT	1050
19.	[Symbol]	6/16 AMP POWER POINT	200
20.	[Symbol]	16 AMP. POWER POINT (FOR TOI GEYSER) AS SPECIFIED	1500 / OR
21.	[Symbol]	16 AMP. POWER SOCKET (FOR KIT GEYSER) (CONTROL AT SWITCH BOARD)	2250
22.	[Symbol]	16 AMP SWITCH CONTROL FOR KIT. GEYSER	1050
23.	[Symbol]	20 AMP SWITCH / SOCKET (POWER POINT) & 1 NO. CABLE OUTLET (IN DUCT)	200 / OR AS SPECIFIED
24.	[Symbol]	CABLE OUTLET POINT BEHIND SPLIT AC UNIT FOR ELECTRICAL CONNECTION	2550 / OR AS SPECIFIED
25.	[Symbol]	TELEPHONE POINT	200
26.	[Symbol]	TELEPHONE & INTERCOM POINT	200
27.	[Symbol]	TELEPHONE POINT (BED SIDE)	550
28.	[Symbol]	INTERCOM POINT	200
29.	[Symbol]	CALL BELL PUSH (FOR VDP)	1500
30.	[Symbol]	BUZZER (JUNCTION BOX ONLY)	2250
31.	[Symbol]	VIDEO DOOR PHONE	1200
32.	[Symbol]	SWITCH BOARD	1050
33.	[Symbol]	SWITCH BOARD (BED SIDE)	550
34.	[Symbol]	T.V. & TEL. JUNCTION BOX (IN APARTMENT)	2250
35.	[Symbol]	T.V. & TEL. JUNCTION BOX (IN DUCT)	1200
36.	[Symbol]	DISTRIBUTION BOARD (TOP LEVEL)	2100
37.	[Symbol]	INDICATES CONTROLLING OF LIGHT/ FAN FROM SWITCH BOARD	
38.	[Symbol]	INDICATES CONTROLLING OF EMERGENCY LIGHT POINT	

Notes : (Electrical)

- R, Y & B indicates phases.
- The number written near the switch board and power points indicates circuit number. For detail of circuits refer distribution board charts.
- The size of wires from switch board to different light and fan points shall be 1.0 sq. m.
- For secondary power point the circuit wire shall be looped from first power point by 2 x 2.5 sq. mm. (Wherever specified)
- 6 amp. switch socket shall be connected to the lighting ckt. of that area by 1.0 sq. mm.
- The size of submain conduit from electrical shaft to each flat D.B. shall be 25 / 32 / 40 Ø (as mentioned in D. B. schedule).
- TV / Tel. conduit sizes shall be :
 - From LV shaft to TV / Tel junction box : 2 nos. 25Ø (1 No. for T.V. & 1 No. for Telephone / Data / Intercom)
 - From TV / Tel. J. B. to further distribution : 25 mm dia.
- The conduits used for wiring shall be as follows :
 - PVC - Heavy duty (2 mm thick) : In RCC slab / RCC Wall
 - PVC - Medium duty (1.6 mm thick) : In brick wall / Block work / 25 mm dia.
 - The minimum conduit size in RCC Slab / RCC Wall shall be 25 mm dia.
 - M.S. (16 SWG) : All surface conduit inside shaft
- RG & T.V. coaxial wire shall be laid from LV shaft / T.V. & Tel junction box to each T.V. outlet separately.
- Cat - 6 cable for Tel. / Data / EPABX shall be laid from LV shaft / T.V. & Tel junction box to Tel. point in Loop.
- Parking / Corridor / Staircase lights shall be directly controlled from MCB - DB through 2 x 1.5 sq. mm wires as shown in drawings.
- No two dissimilar phase circuit / wire shall run together through same conduit.
- Light and power circuit shall be drawn through separate conduit.
- Wiring shall be carried out as per colour code i.e. R, Y, B phases and black - neutral and green - earth.
- The sequence of phase distribution in different apartments will be different for overall phase balancing.
- The position mentioned in legend is bottom of switch board / outlets.
- The openings inside Electrical, LV & Fire shaft should be sealed at each floor.
- Conduit drop should be precisely co-ordinated with brick work. It is advised to mark brick work layout on slab before casting for exact position of conduit drop.
- In case of two way fans, the switch will be provided on main board, while regulator will be provided on bed side board.
- In case of any discrepancy in the drawing, the same may be brought to the notice of electrical consultant for approval before execution.
- The Earth Continuity wire has to be laid for all electrical outlets / sockets / light / fan points. Size of earth wire shall be as follows :

Phase Wire (sq. mm)	2x1.5	2x2.5	2x4	2x6	2x10	2x16	4x6	4x10	4x16
Earth Wire (sq. mm)	1x1.0	1x1.5	1x2.5	1x4	1x6	1x16	2x4	2x6	2x6



DISTRIBUTION BOARD : (A) 6 WAY - TPN (8+18 MODULES)
LOCATION :- TYPICAL FLOOR (TOWER-K)

CKT. NO.	WIRE SIZE IN SQ. M.M.	SP. MCB'S RATING IN AMP	LOCATION	PHASE
A-1	2 x 1.5	6	FOYER, POOJA & DINING	R
A-2	2 x 1.5	6	LIVING	R
A-3	2 x 1.5	6	M.BED ROOM, DRESS TOILET & BALCONY	Y
A-4	2 x 1.5	6	BED ROOM, TOILET & BALCONY	Y
A-5	2 x 1.5	6	BED ROOM, DRESS & TOILET	B
A-6	2 x 1.5	6	KITCHEN & UTILITY	B
A-7	2x4/2x2.5	20	KITCHEN POWER & W/M	R
A-8	2x4/2x2.5	20	KITCHEN GEYSER & KITCHEN POWER	R
A-9	2 x 2.5	16	TOILET GEYSER	Y
A-10	2x4/2x2.5	20	DINING POWER & TOILET GEYSER	Y
A-11	2 x 2.5	16	TOILET GEYSER	B
A-12	2 x 4	20	M.BEDROOM (AC)	B
A-13	2 x 4	20	LIVING (AC)	R
A-14	2 x 4	20	DINING (AC)	Y
A-15	2 x 4	20	BEDROOM (AC)	B
A-16	2 x 4	20	BED ROOM (AC)	Y
A-17	TO A-18		SPARES	

INCOMER -> 40 AMP FP MCB + 40 AMP FP RCCB (30mA) (Type - A)
SUBMAIN -> (4 X 10) + (2 X 6) SQ. M. M. + 1NO. 3 PAIR TEL. WIRE FOR METER INDICATION (32Ø CONDUIT)

DISTRIBUTION BOARD : (B) 6 WAY - TPN (8+18 MODULES)
LOCATION :- TYPICAL FLOOR (TOWER-K)

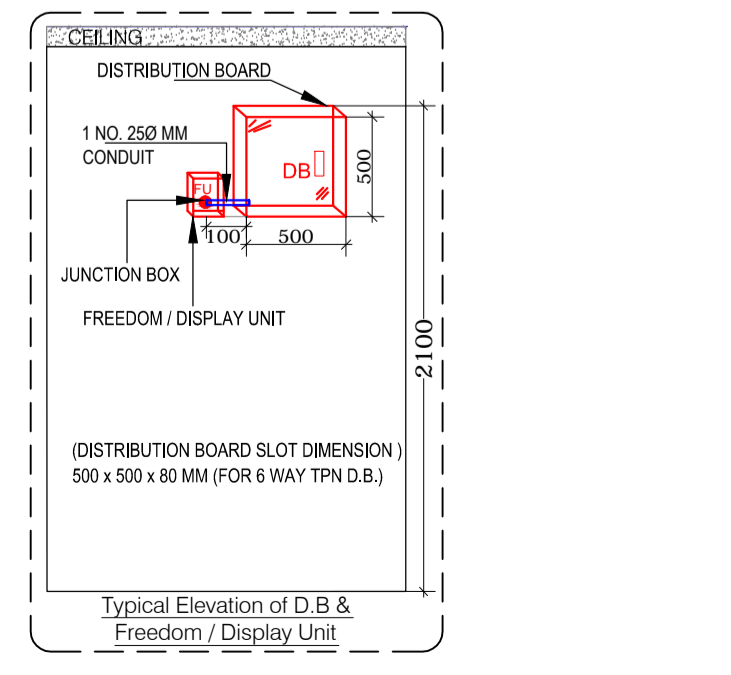
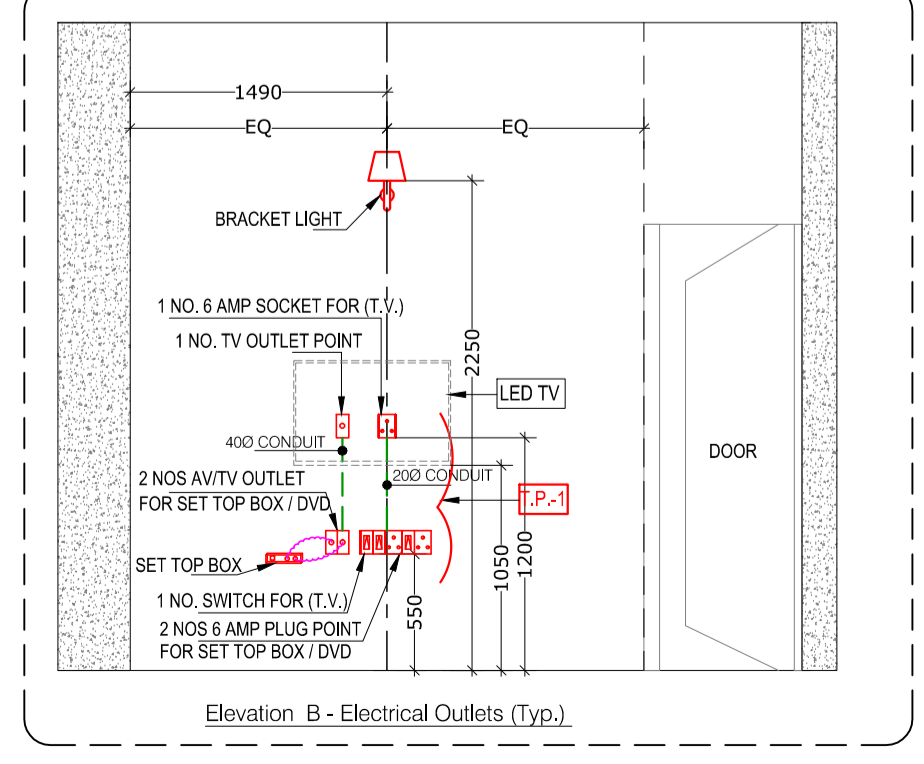
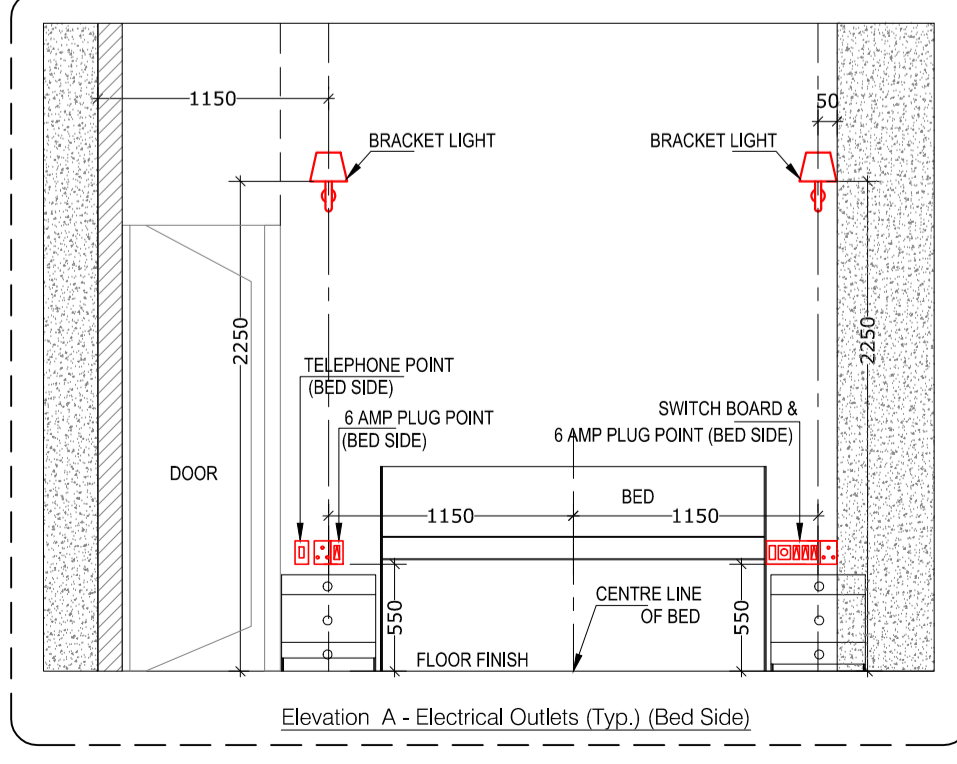
CKT. NO.	WIRE SIZE IN SQ. M.M.	SP. MCB'S RATING IN AMP	LOCATION	PHASE
B-1	2 x 1.5	6	LIVING, TOILET & DINING/LOUNGE	Y
B-2	2 x 1.5	6	BED ROOM, TOILET & BALCONY	Y
B-3	2 x 1.5	6	KITCHEN & BALCONY	B
B-4	2 x 1.5	6	BED ROOM & PASSAGE	B
B-5	2 x 1.5	6	M.BED ROOM, DRESS & TOILET	R
B-6	2 x 2.5	16	TOILET GEYSER	R
B-7	2x4/2x2.5	20	DINING POWER & KITCHEN POWER	Y
B-8	2x4/2x2.5	20	KITCHEN POWER & GEYSER	Y
B-9	2 x 2.5	16	TOILET GEYSER	B
B-10	2x4/2x2.5	20	TOILET GEYSER & W/M	R
B-11	2 x 4	20	BED ROOM (AC)	R
B-12	2 x 4	20	DINING/LOUNGE (AC)	B
B-13	2 x 4	20	BEDROOM (AC)	Y
B-14	2 x 4	20	M.BEDROOM (AC)	R
B-15	2 x 4	20	LIVING (AC)	B
B-16	TO B-18		SPARES	

INCOMER -> 40 AMP FP MCB + 40 AMP FP RCCB (30mA) (Type - A)
SUBMAIN -> (4 X 10) + (2 X 6) SQ. M. M. + 1NO. 3 PAIR TEL. WIRE FOR METER INDICATION (32Ø CONDUIT)

DISTRIBUTION BOARD : (C) 6 WAY - TPN (8+18 MODULES)
LOCATION :- TYPICAL FLOOR (TOWER-K)

CKT. NO.	WIRE SIZE IN SQ. M.M.	SP. MCB'S RATING IN AMP	LOCATION	PHASE
C-1	2 x 1.5	6	FOYER, POOJA & DINING	B
C-2	2 x 1.5	6	LIVING POWDER RM	B
C-3	2 x 1.5	6	BED ROOM, TOILET & BALCONY	R
C-4	2 x 1.5	6	M.BED ROOM, DRESS & TOILET	Y
C-5	2 x 1.5	6	BED ROOM, TOILET & BALCONY	Y
C-6	2 x 1.5	6	KITCHEN & UTILITY	R
C-7	2x4/2x2.5	20	KITCHEN POWER & W/M	B
C-8	2x4/2x2.5	20	KITCHEN GEYSER & KITCHEN POWER	B
C-9	2 x 2.5	16	TOILET GEYSER	R
C-10	2x4/2x2.5	20	DINING POWER & TOILET GEYSER	R
C-11	2 x 2.5	16	TOILET GEYSER	Y
C-12	2 x 4	20	BEDROOM (AC)	Y
C-13	2 x 4	20	LIVING (AC)	B
C-14	2 x 4	20	M.BEDROOM (AC)	R
C-15	2 x 4	20	BEDROOM (AC)	Y
C-16	2 x 4	20	BED ROOM (AC)	R
C-17	TO C-18		SPARES	

INCOMER -> 40 AMP FP MCB + 40 AMP FP RCCB (30mA) (Type - A)
SUBMAIN -> (4 X 10) + (2 X 6) SQ. M. M. + 1NO. 3 PAIR TEL. WIRE FOR METER INDICATION (32Ø CONDUIT)



rev. no.	date	revision
R2	19.07.2017	Revised as per arch. plan & telephone revised.
R1	15.06.2016	Issued as G.F.C.

project
ORANGE CASTLE AT LUCKNOW

title
ELECTRICAL WIRING DRAWING (TOWER-K)

subtitle
TYPICAL FLOOR PLAN (B+S+13) (LEVEL- 3rd,5th & 7th FLOOR)

drawing released for
 APPROVAL SUBMISSION
 ADVANCE COPY CONSTRUCTION

Drg. No : CES / OC / T - K / EL-03 (sheet # 1 of 2)

Scale : 1: 65 @ A1 **Drawn By :** Desraj

Date : June 2016 **Design By :** M. Sadiq

Ckd By : Anand Havelia

Architects :
A R C H I T E C T S
 ARCHITECTURE INTERIORS
 C-28C, Sector-8, Noida - 201301 (G.P.)
 T 91 120 46 40 300
 F 91 120 42 46 788
 mail@archchm.com
 www.archchm.com

services consultant
Consummate Engineering Services (P) Ltd.
 Noida Office : B - 67, Sector - 67, Noida - 201 301
 Tel : (0120) 6943500 (24 Lines)
 Lko. Office : R 006, Rohnas Plumeria, Gomti Nagar, Lucknow
 e mail : mail@cespl.in, website : www.cespl.in