

MAHAGUN PURAM

LIG ( 1BHK)

Carpet Area = 403.86 sq. ft.

Balcony Area = 40.25 sq. ft.

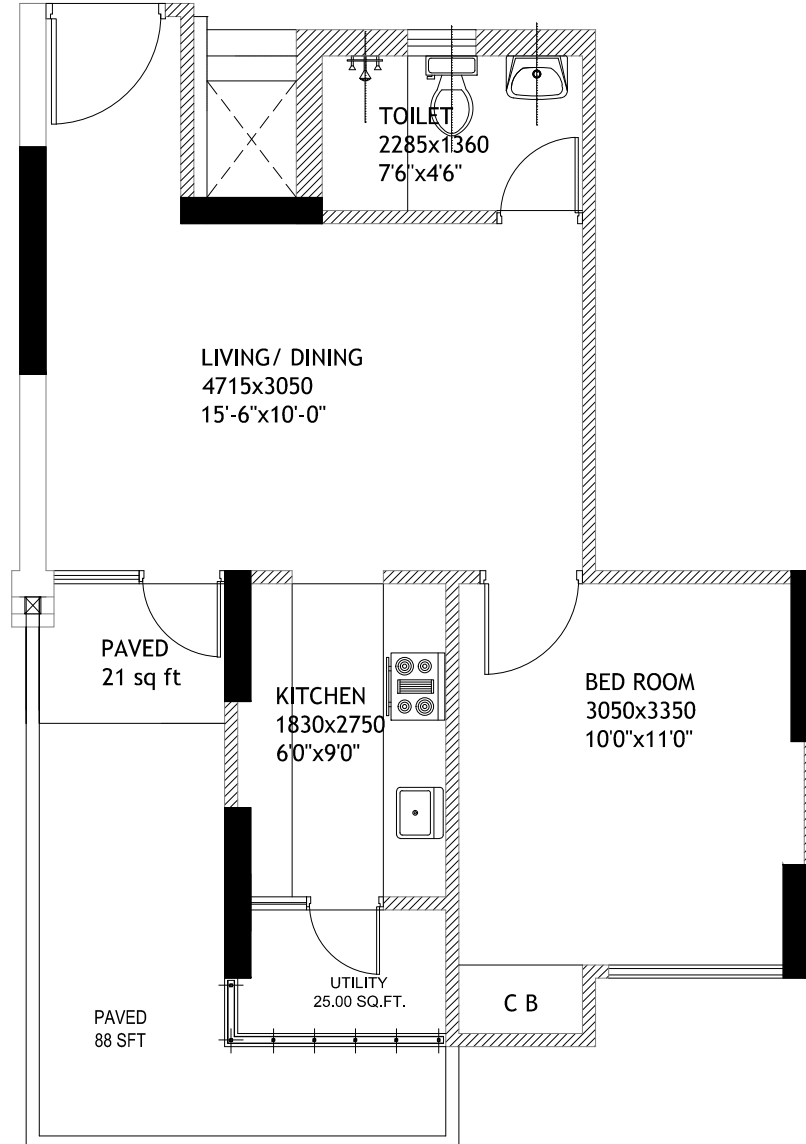
PAVED AREA =88.00 SQ.FT.

UNIT NO-66,73 (TOWER-9), Kaveri

FLOOR NO:- Ground Floor

UNIT NO-78,85 (TOWER-11),Narmada

FLOOR NO:- Ground Floor



Disclaimer:-Carpet Area has been calculated based on the clarifiacion issued by Maharera via:- MAHARERA/SECY/FILE NO: 27/ 84 / 2017 Dated :-14 june 2017