

PROJECT SPECIFICATION OF AARAT MITTAL COLONY

on

MAUJA JAISINGHPURA BANGER, MATHURA

Permit No. . Plotted Resi development / Plotted Housing/04445/MVDA/LD/23-24/1217/24012024

1. PROJECT INFORMATION

- a. Project Name: AARAT MITTAL COLONY
- b. 4 Residential plots
- c. Architect: Abhishek Bansal, CA/2018/93929
- d. Amenity Distance
 - i. With in 100 m from NH
 - ii. Bus Stand- 3 Km
 - iii. Railway Station – 8 Km
 - iv. Main Connecting Road – NH-19
 - v. Hospitals: Walking Distance
- e. Project Coordinator: Rahul Singhal (9897676006), Email-rahul29singhal@gmail.com

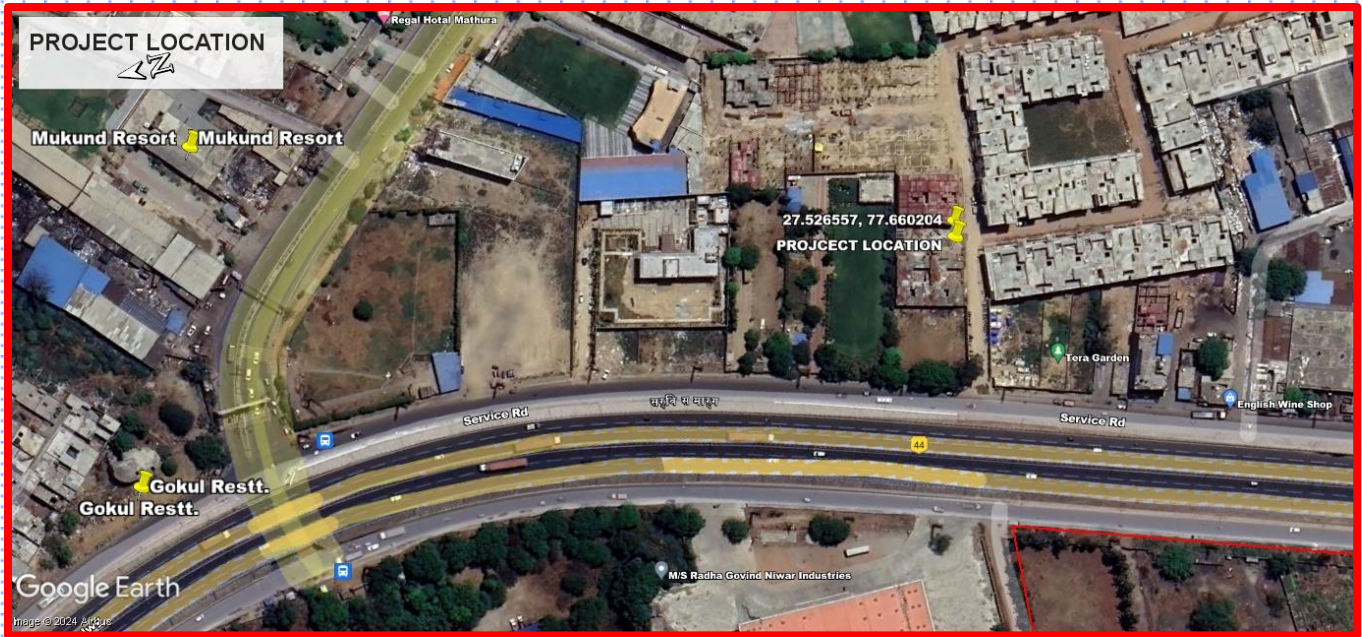
2. ACCESS

- a. 9.60 m wide approach to Site

3. DEVELOPMENT WORK

- a. A 6 to 8 feet high compound wall, wind / Earthquake resistant
- b. Single gate Access
- c. Tree plantations along the compound wall and in front/rear setback.
- d. Road: - 9m wide roads having 4” Paver Block surface over well compacted earth and proper slopes for easy run off
- e. Footpath - 4” Paver Block surface over well compacted earth along the park boundaries
- f. Rainwater harvesting to cater for storm water to improve the level of ground water, designed with latest standards
- g. Streetlight: - Elegant Street lights to create proper illumination.
- h. Electricity: - Through lines / Electric Poles. Individual Transformer for the project to cater for the domestic use of resident, as approved by DVVNL.
- i. Lined covered drain, with drain covers resistant to traffic and weather.

- j. Individual Septic Tanks.
- k. All arrangements necessary will be made regarding the project.
- l. Water: Ground water through pump house as per approved MVDA Map.



PROJECT LOCATION

DEVELOPED BY

AARAT MITTAL