

ZOE

*desired life...*

FINALLY AN ADDRESS THAT  
**MAKES  
SENSE.**

WELCOME TO

**ZOE**

*desired life...*

# RISING UTTAR PRADESH.

## LUCKNOW

Welcome to the fastest progressive state of India – U.P. Today Uttar Pradesh isn't just known for the Taj Mahal or the Kumbh Mela. Rather, it has gained recognition for making available and applying modern techniques, equipments and amenities into all walks of life. It is the only state that offers infinite possibilities for investment.

Lucknow, found a place in the growing list of Prime Minister of India's 100 smart cities mission. Experts see this city of erstwhile Nawabs as one of the fastest growing cities in the country as well as amongst the peer group of Tier II cities is now a well established fact. According to recent Reserve Bank of India report, Lucknow witnessed the highest increase in housing prices in the country rose during the October-December quarter of the 2015-16. On an annual basis, in Q3:2015-16, Lucknow witnessed the highest increase of 16.1 per cent.

Besides, Lucknow is a very well connected city and has very good road, rail and air connectivity. It is witnessing significant infrastructure growth, including Lucknow Metro, IT City being developed by HCL Technologies, Indian Institute of Information and Technology (Lucknow) and the 1,000-bed Medanta – Awadh super-specialty hospital. All of these combined together have made the city the toast of real estate investors. Lucknow, Uttar Pradesh is an ideal and attractive investment destination, where human resource is in abundance and industrialists get the right and encouraging environment to establish business.





# A CITY GROWING AT RAPID PACE

Lucknow is placed among the fastest growing cities of India and is rapidly emerging as a manufacturing, commercial and retailing hub. This unique combination of rich cultural traditions and brisk economic growth provides Lucknow with an aura that refuses to fade away. Lucknow has also developed as a metro city of Uttar Pradesh.

Some of the highlights of Lucknow City are :

- Lucknow Metro
- International Cricket Stadium
- IT City
- Lucknow-Agra Expressway

So if you are planning on investing in real estate in Lucknow, this is the right time highly recommended by real estate experts.

# SUSHANT GOLF CITY

## SITE ADVANTAGES

- 18 hole International Standard Championship Golf Course and Golf Club designed by Dr. Martin Hawtree, U.K
- Community Centres
- Commercial Zones
- Post Office / Banks / ATMs
- G.D. Goenka Public School
- Best Price - A Bharti Walmart Venture
- Ansal Institute of Technology & Management
- Royal Palms Golf and Country Club
- Ansal API ISKCON Spiritual Centre
- Tourist Leisure Zone
- Amusement Park
- 5 Star & Budget Hotels
- Ansal Plaza
- I.T / Bio Tech Park



# ABOUT SHIV SHAKTI



Shiv Shakti Group is an emerging real estate conglomerate in Lucknow. Shiv Shakti Infravision Pvt. Ltd. stands firm in its commitment to 'creating value and cementing trust' and is heading towards greater success. Shiv Shakti group caters to aspirations of people by offering various projects at strategically identified locations. With an aim to bring innovation in the field of real estate and to gift the city of Lucknow a remarkable lifestyle that will change the face of living and take the city to a new heights.

We exist to make a positive difference in society, be it homes, offices, retails, hospitality, health and education. We try to live up to the expectations for those who dream big.

#### **Our Vision**

Driven with commitment to deliver for customer using innovative and professional expertise. Commitment towards Quality, Integrity and Value Creation for all customers.

#### **Our Mission**

To create work culture of professionals who have competent leadership quality to work as a cohesive unit.

# ABOUT ZOE

*desired life...*

ZOE is life, standing by its literal meaning. It is not just a place, it's a feeling that mesmerizes you right through and inside out. It is a symbol of dreams and desires that one seeks to avail. ZOE brings you a life suited to your refined tastes and attitudes. ZOE is the perfect landmark that's designed to suit the preferences and discerning demands of the bold and ambitious.

Get used to an extravagant lifestyle and comforts which are required to live a luxurious life at the doorstep. It's an opportunity to get the quality you deserve by offering a complete mix and match any of these elements to suffice any of our client's leisure requirements. ZOE is the perfect architectural marvel for those who want to change the world with innovative business ideas. Offering a balanced mix of luxurious and commercial spaces, we provide the ideal setting for those who love to encompass all aspects of modern day living within the gated community and believe in experiencing it to the fullest. ZOE is the perfect architectural marvel for those who want to change the world with innovative business ideas.



ENJOY THE BEST OF  
FACILITIES...

SHOPPING ZONE

FOOD COURT

KIDS ZONE | MULTIPLEX | CLUB

PREMIUM OFFICES

SERVICED SUITES | PUB & BAR





# SHOPPING ZONE

ZOE will showcase the magnetic power of the world's most famous brands. ZOE will elevate luxury shopping to a new high, recreating a global shopping experience in Lucknow.

The upscale hypermarket in ZOE will offer discerning customers a premium selection of fresh produce and popular brand merchandise.

# FOOD & BEVERAGE

Food and beverage forms an integral part of the shopping, leisure and entertainment experience, and understanding our customers is essential when catering for their tastes and needs.

ZOE, with its efficient and convenient back-of-house servicing, will provide food and beverage outlets to satisfy its diverse range of patrons. As diversity dictates, there will be a variety of international and local cuisine, service, style, quality, design, ambience and pricing structures available.

Cafés will be conveniently placed throughout the Mall, enabling visitors to relax and refresh, while the food courts and kiosks will offer choice, value for money and rapid service.

ZOE will present an array of culinary delights in its waterfront restaurants, pub & bars which will overlook the serene wadi canals and the apex dome of the Restless Planet, which will dominate the skyline.





# ENTERTAINMENT

ZOE Offers a complete family experience, there's a large multiplexes and kids' zone, along with smaller retail outlets across the township providing all your home essentials for enhanced convenience.



# CLUB

ZOE clubhouse is the embodiment of leisure and grandeur. Established as the best and one of the finest examples of world-class facilities in Lucknow, it's a clubhouse so grand, you'll never want to leave. It's got everything you'll ever want and more than you can imagine. The endless list of facilities and conveniences include:

- Gym with state-of-the-art equipment
- Meditation and yoga spaces
- Modern swimming pool
- Snooker and pool rooms
- Videogames zone with large-screen TVs
- Indoor games
- Children games
- A stately multipurpose ballroom

A modern office space with white desks, black chairs, and large windows overlooking a city skyline. The office is clean and organized, with multiple workstations. The windows provide a panoramic view of a dense urban area with various skyscrapers and buildings.

# PREMIUM OFFICES

ZOE's stunning premium offices are the ultimate in space and luxury. Situated in prime locations of the township, these offices are the harmony of unparalleled splendour with an elevated experience of an all encompassing modern working life.



# SERVICE SUITES

The perfect welcome into your life of luxury. ZOE's service apartments exemplify contemporary comfort for your family and are ideal for new families and young couples.

Step into an iconic world and live life beyond your expectations.

# LOCATION ADVANTAGE

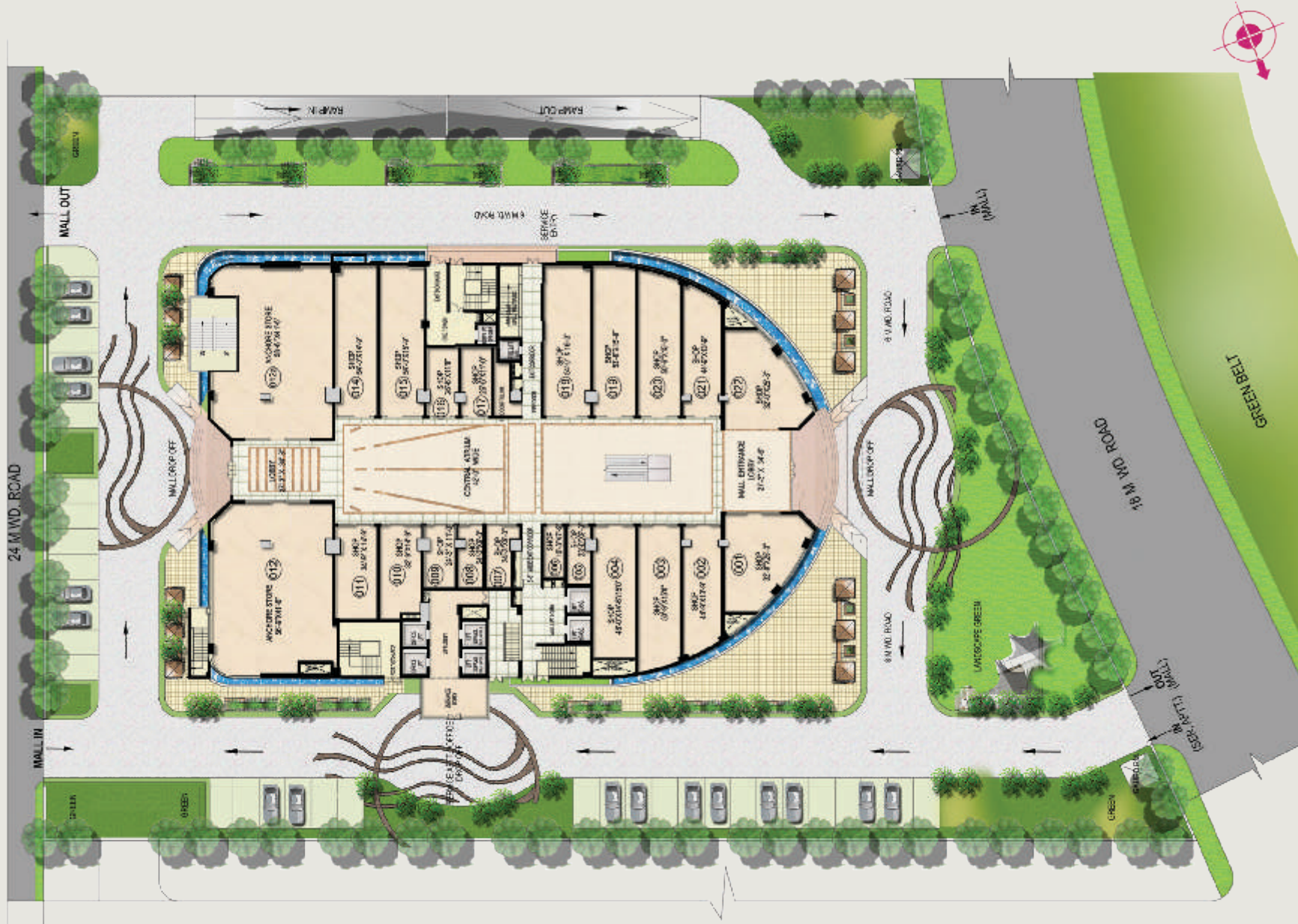
Located on one of the city's main thoroughfares, the Amar Shaheed Path Road, and in the heart of Ansal API Sushant Golf City, ZOE will proudly dominate the landscape and become a benchmark for Lucknow urban development.

- 18 kms from Charbagh Railway Station
- Site abutting BBD University
- 4 kms before SGPGI
- Connected to Amausi Airport via Shaheed Path Expressway
- 12 kms from Hazratganj
- Large cash-rich catchment area of Gomti nagar and Extn. (approx. 3 km.)



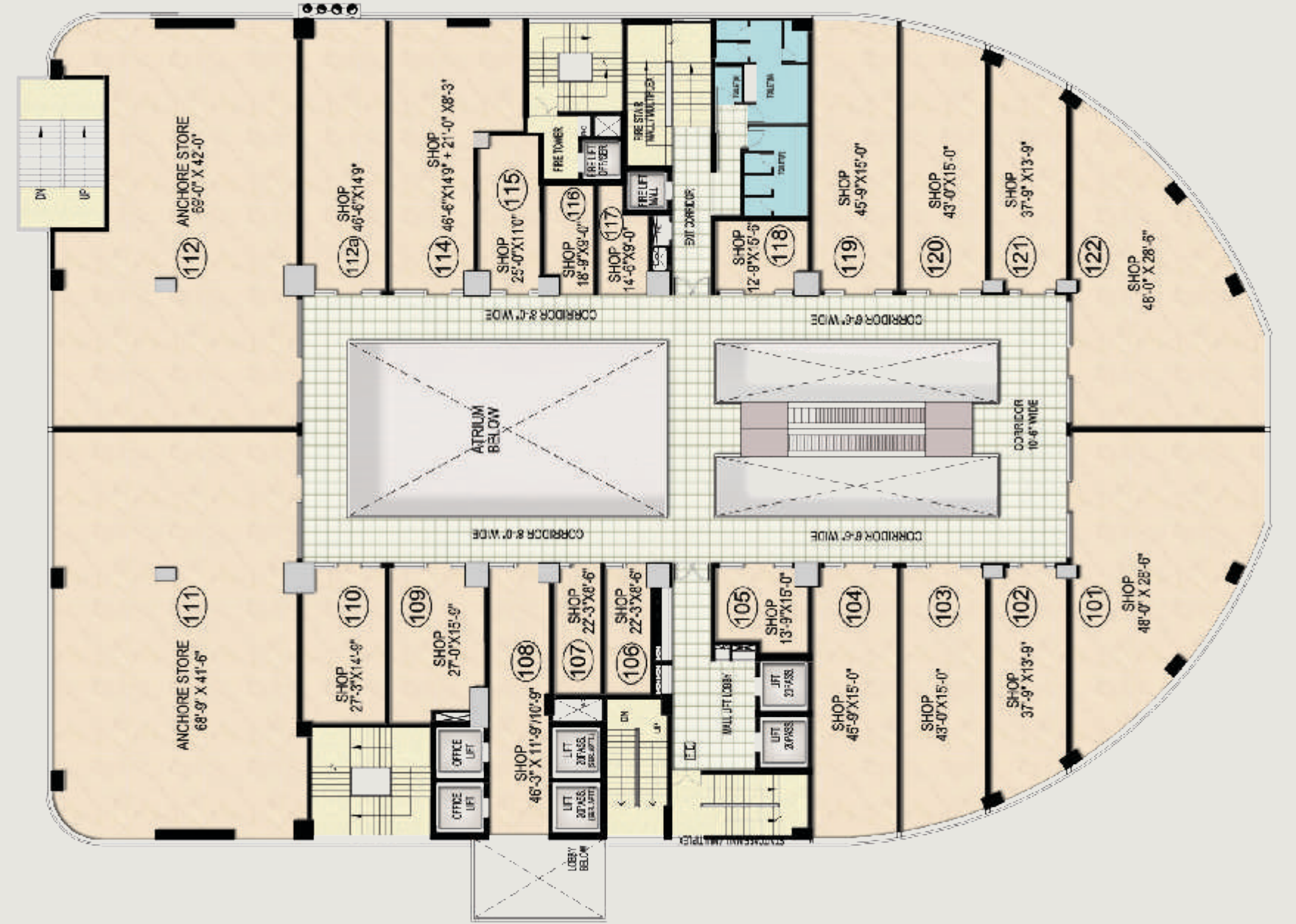
# RETAIL SHOPS FLOOR PLAN

GROUND FLOOR



# RETAIL SHOPS FLOOR PLAN

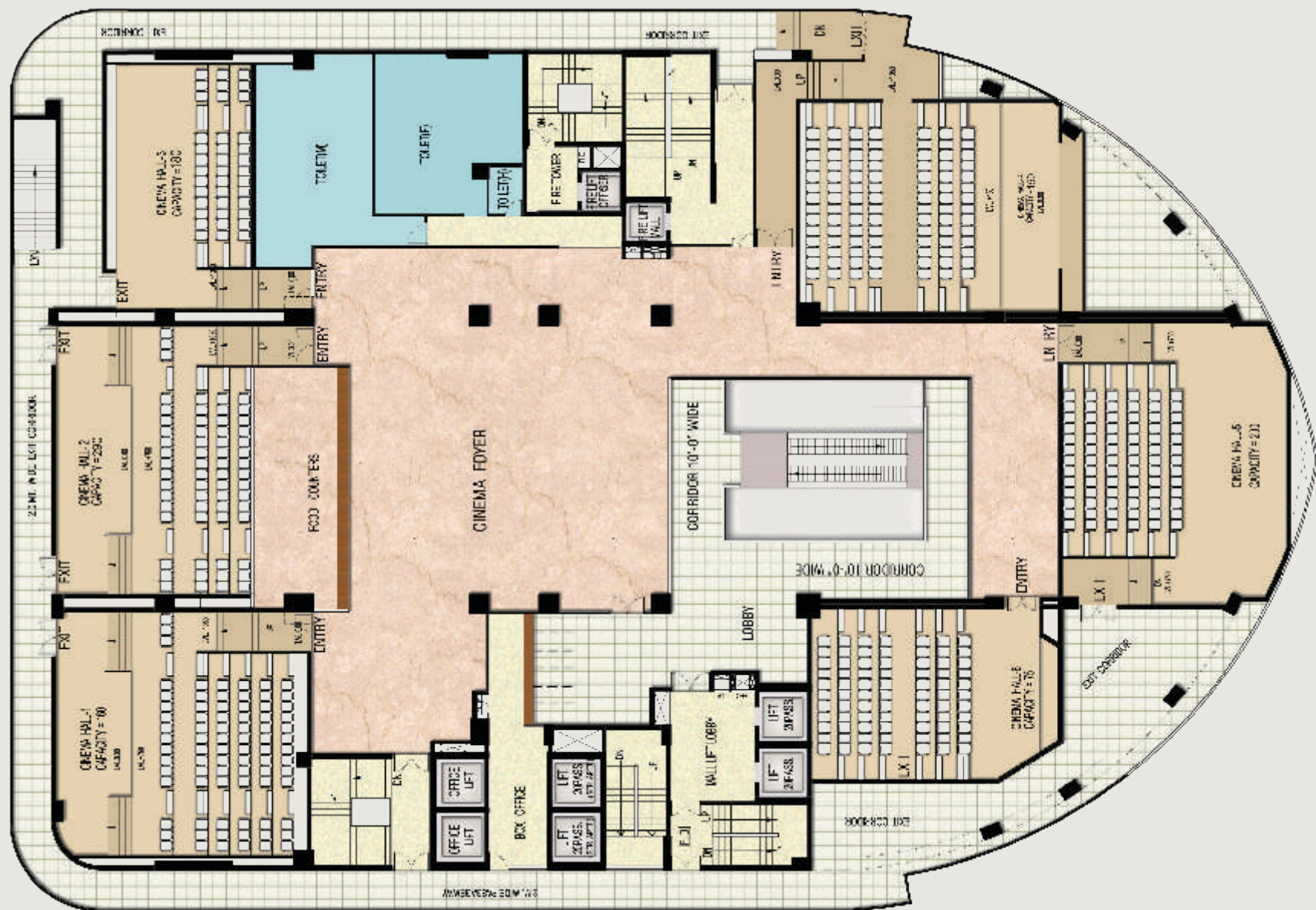
1ST FLOOR





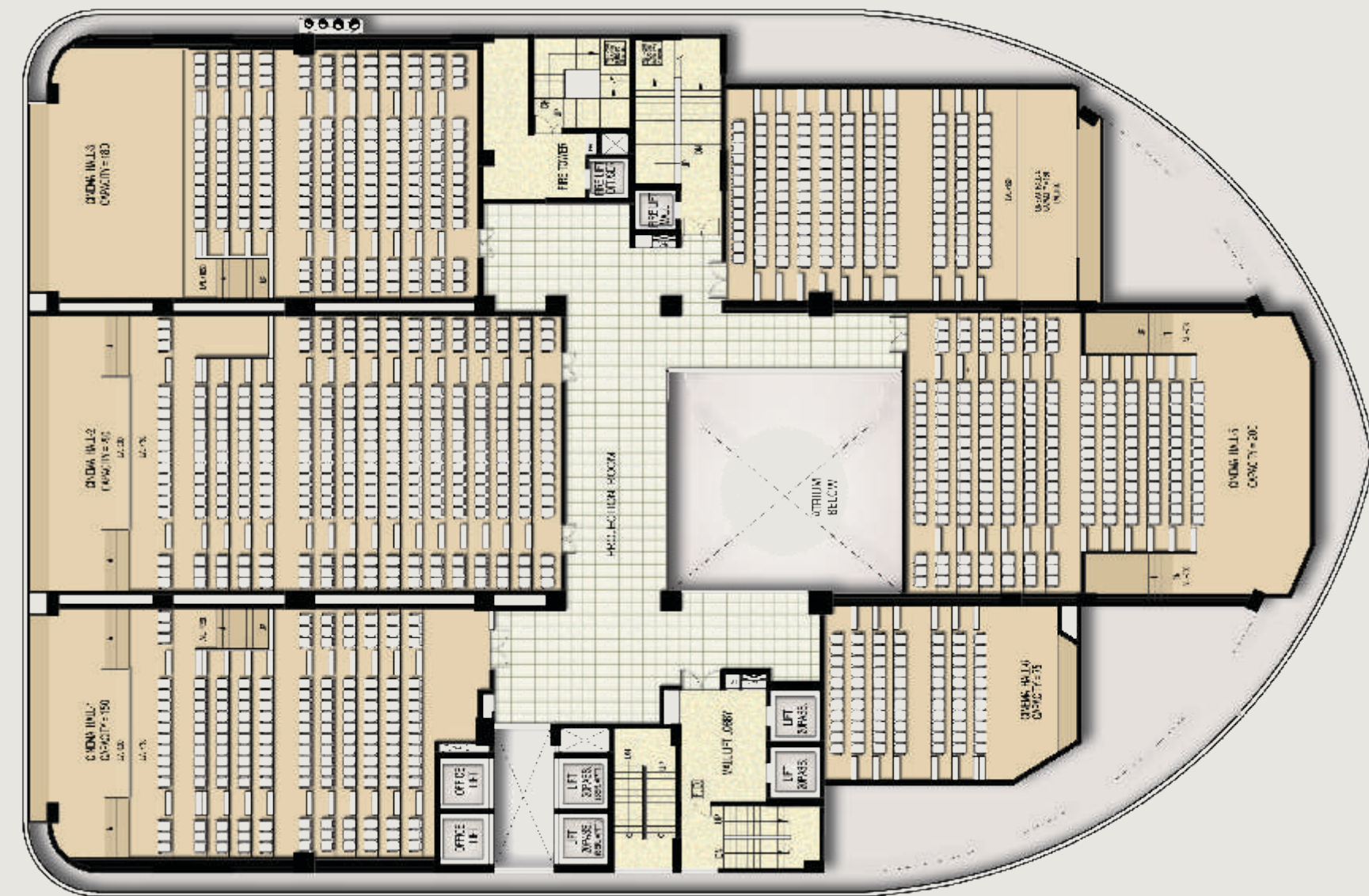
# MULTIPLEX FLOOR PLAN

4TH FLOOR



# MULTIPLEX FLOOR PLAN

4TH FLOOR



# OFFICES FLOOR PLAN

5TH FLOOR



# OFFICES FLOOR PLAN

6TH FLOOR



# OFFICES FLOOR PLAN

7TH FLOOR



# OFFICES FLOOR PLAN

8TH FLOOR



# SERVICE APARTMENTS FLOOR PLAN

9TH FLOOR



# SERVICE APARTMENTS FLOOR PLAN

10TH FLOOR



# SERVICE APARTMENTS FLOOR PLAN

11TH FLOOR



# SERVICE APARTMENTS FLOOR PLAN

12TH FLOOR



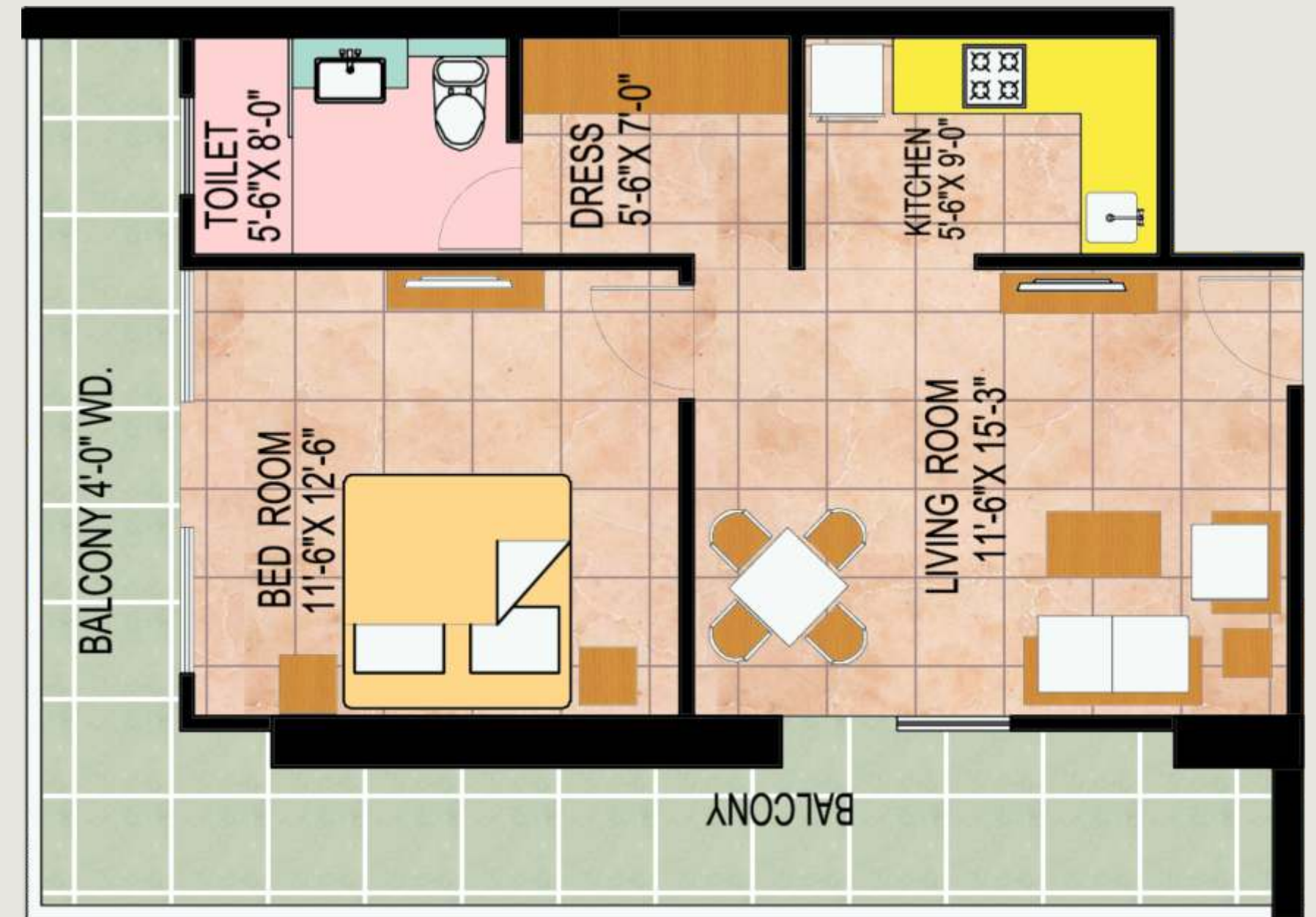
SERVICE APARTMENTS  
UNIT PLAN

TYPE L1  
9TH FLOOR



SERVICE APARTMENTS  
UNIT PLAN

TYPE A  
9TH TO 12TH FLOOR



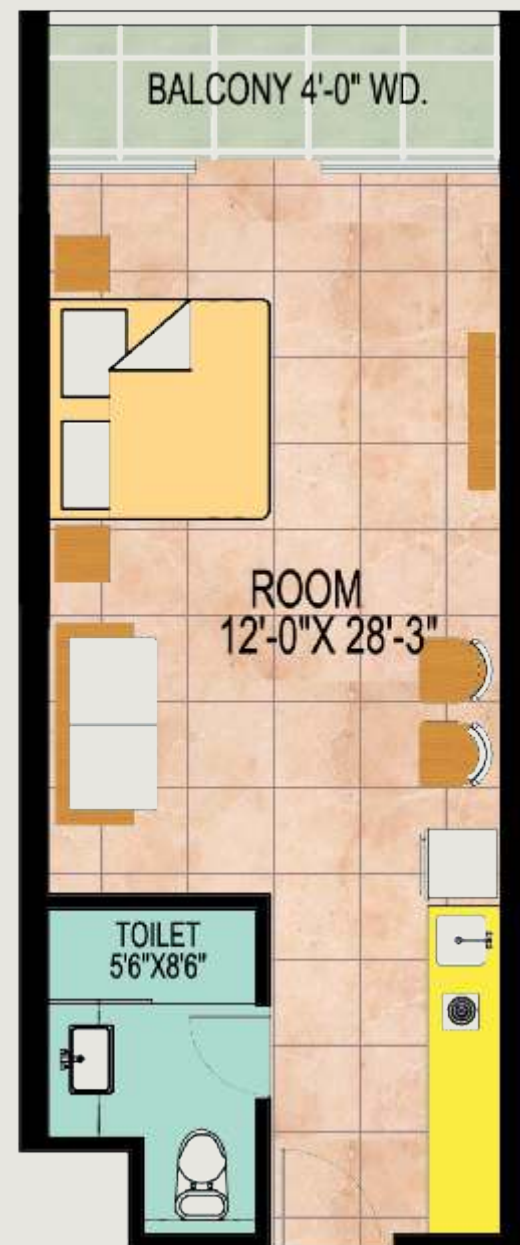
SERVICE APARTMENTS  
UNIT PLAN

SERVICE APARTMENTS  
UNIT PLAN

TYPE B  
9TH TO 12TH FLOOR



TYPE B 1  
9TH TO 12TH FLOOR



TYPE C  
9TH TO 12TH FLOOR



SERVICE APARTMENTS  
UNIT PLAN

SERVICE APARTMENTS  
UNIT PLAN

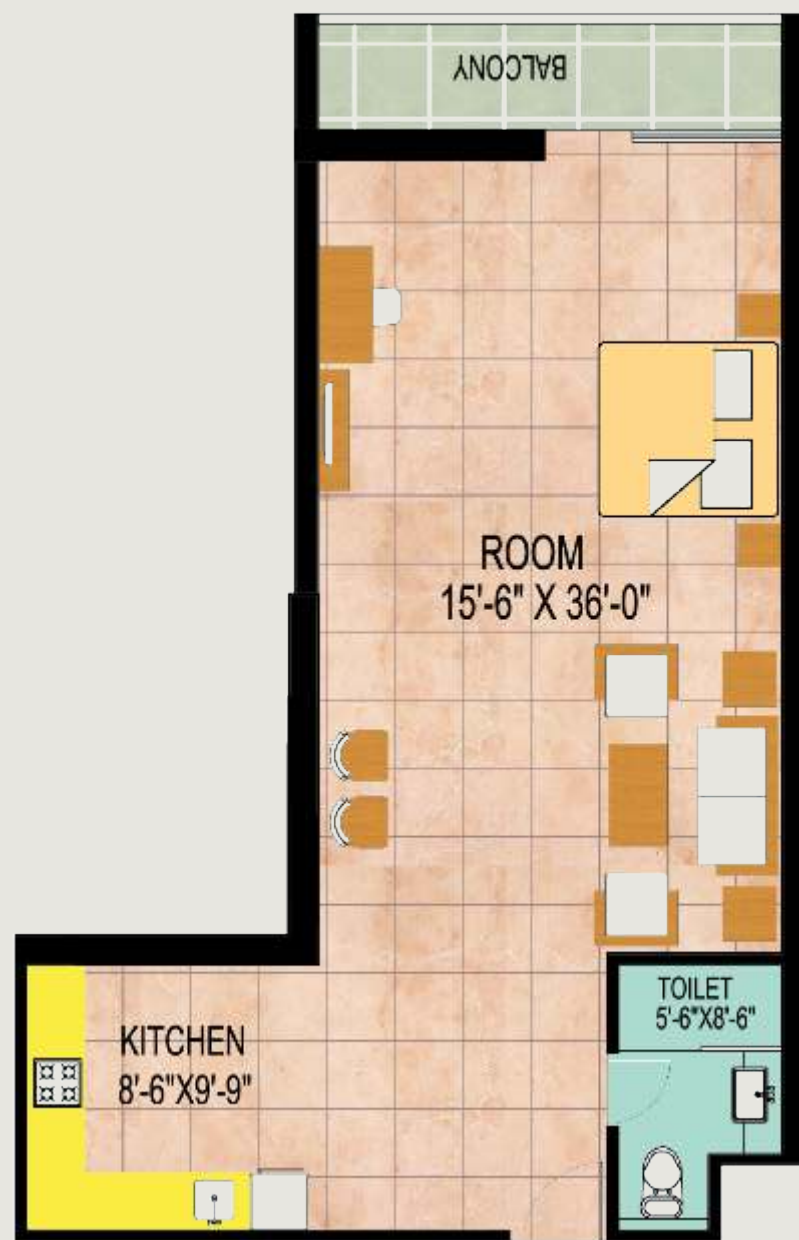
TYPE D  
9TH TO 12TH FLOOR



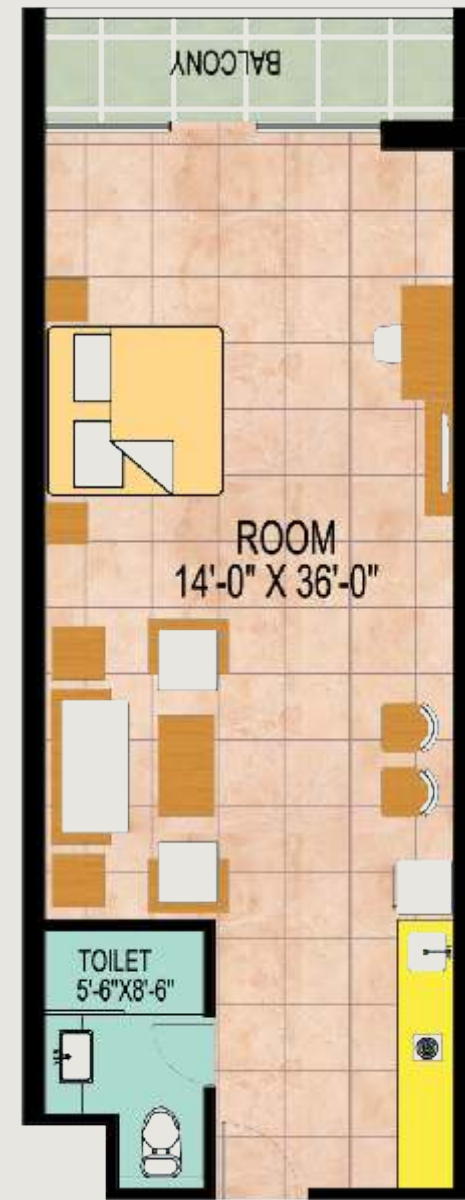
TYPE E  
9TH TO 12TH FLOOR



TYPE F  
9TH TO 12TH FLOOR



TYPE G  
9TH TO 12TH FLOOR



TYPE G1  
9TH TO 12TH FLOOR



TYPE G2  
9TH TO 12TH FLOOR



SERVICE APARTMENTS  
UNIT PLAN

TYPE H  
9TH TO 12TH FLOOR



TYPE H1  
9TH TO 12TH FLOOR



TYPE J  
9TH TO 12TH FLOOR



TYPE J1  
9TH TO 12TH FLOOR



SERVICE APARTMENTS  
UNIT PLAN

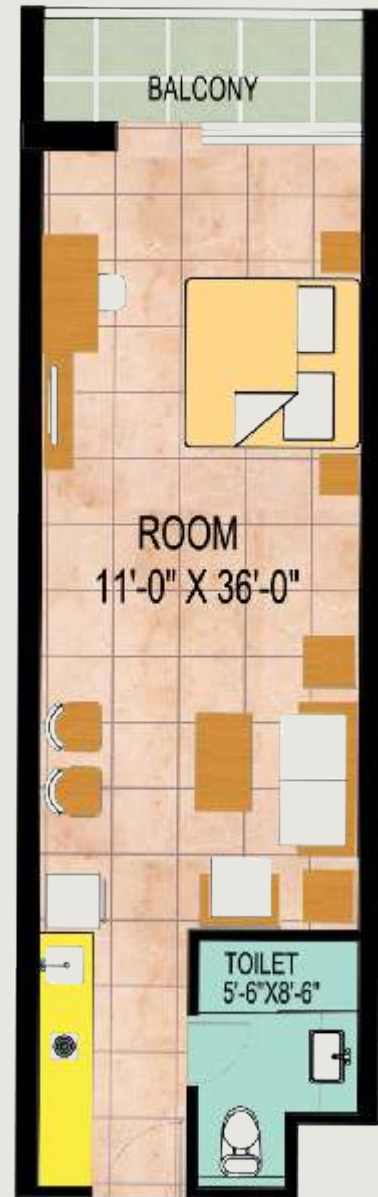
TYPE K  
9TH TO 12TH FLOOR



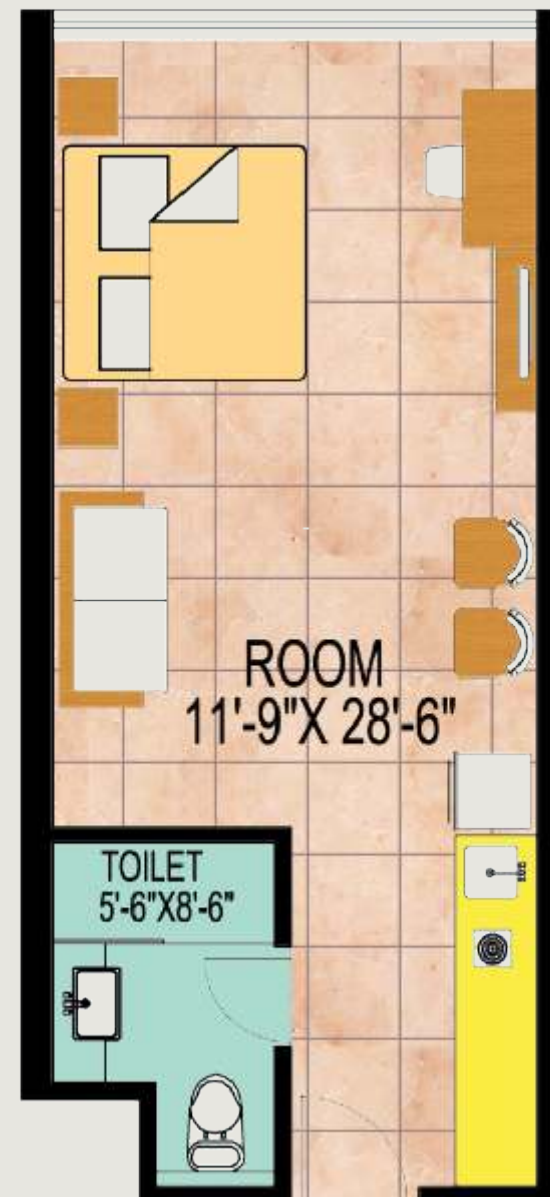
TYPE K1  
9TH TO 12TH FLOOR



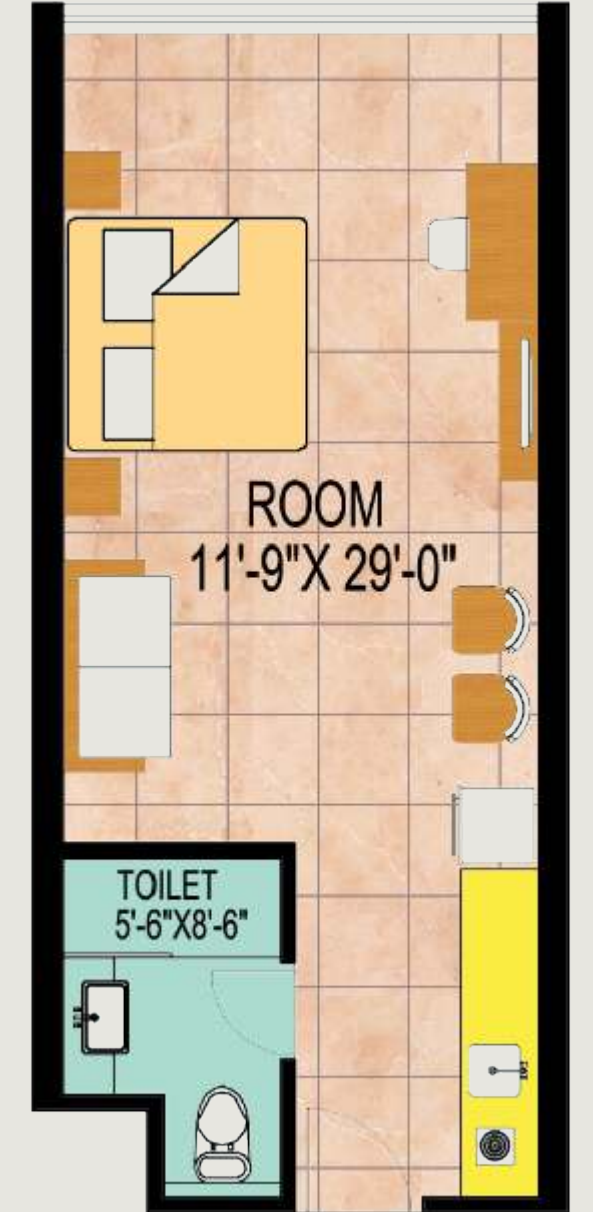
TYPE L  
9TH TO 12TH FLOOR



TYPE M  
9TH TO 12TH FLOOR



TYPE M1  
9TH TO 12TH FLOOR





# Shiv Shakti

INFRAVISION PVT. LTD.

PROJECT DESIGNED BY:



SPACE COMBINE

## OFFICE ADDRESS

Shiv Shakti Infra Vision Pvt. Ltd.  
225, Cyber Heights, Vibhuti Khand,  
Gomti Nagar, Lucknow - 226010  
Tel: +91 7706800050

## SITE OFFICE

Block 2, IT Park II,  
Sushant Golf City,  
Lucknow - 226030

## FOR DIRECT BOOKING

Call us: 1800 - 123 - 9918  
Visit: [www.shivshaktiinfra.com](http://www.shivshaktiinfra.com)  
Mail us: [zoe@shivshaktiinfra.com](mailto:zoe@shivshaktiinfra.com)

The images and illustrations in this brochure are architectural drawings and impressions for illustration purpose only. These are subject to minor modifications during execution. The height of the buildings will be subject to approval from the competent authority. Interiors of the building are illustrative.