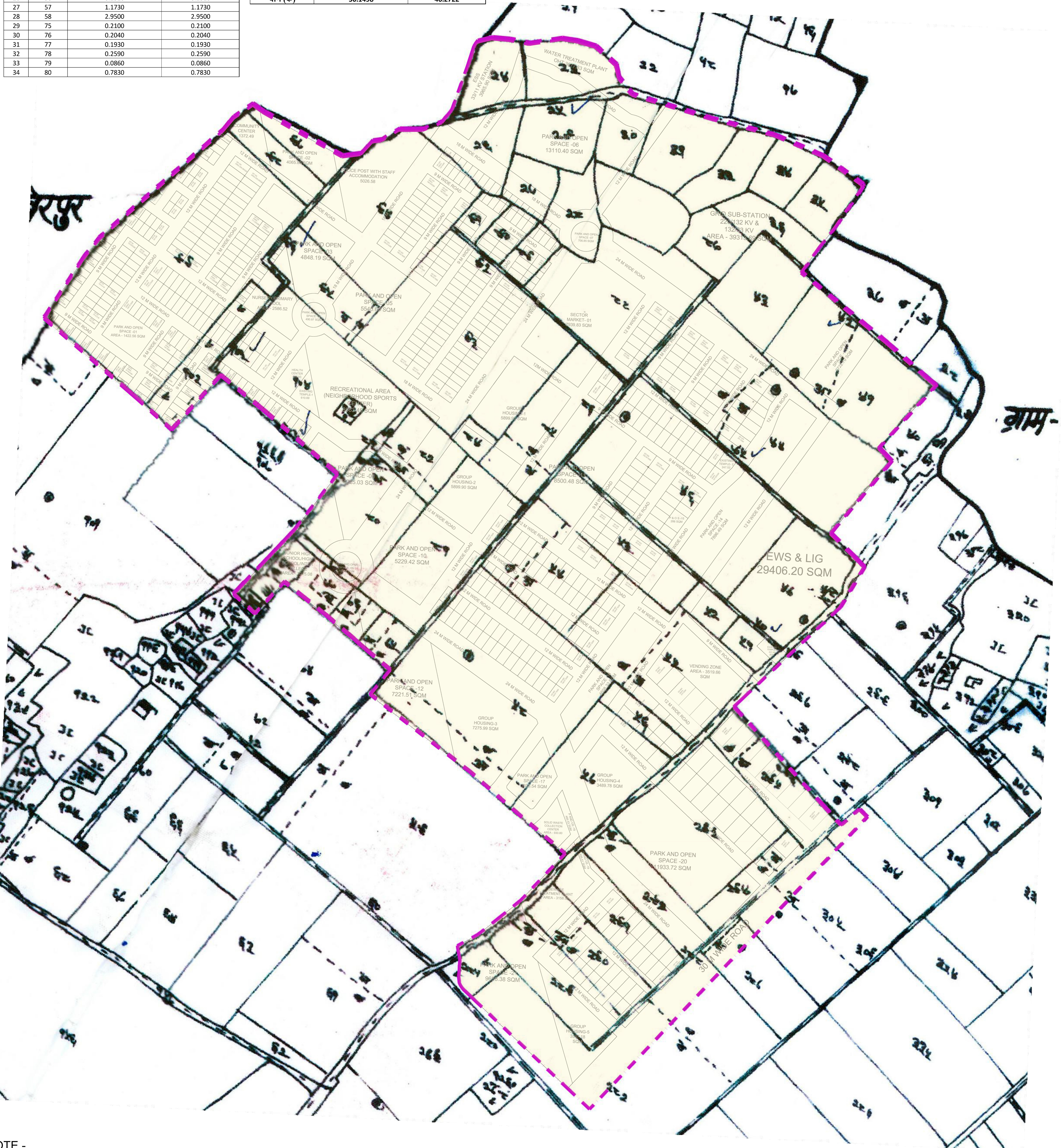
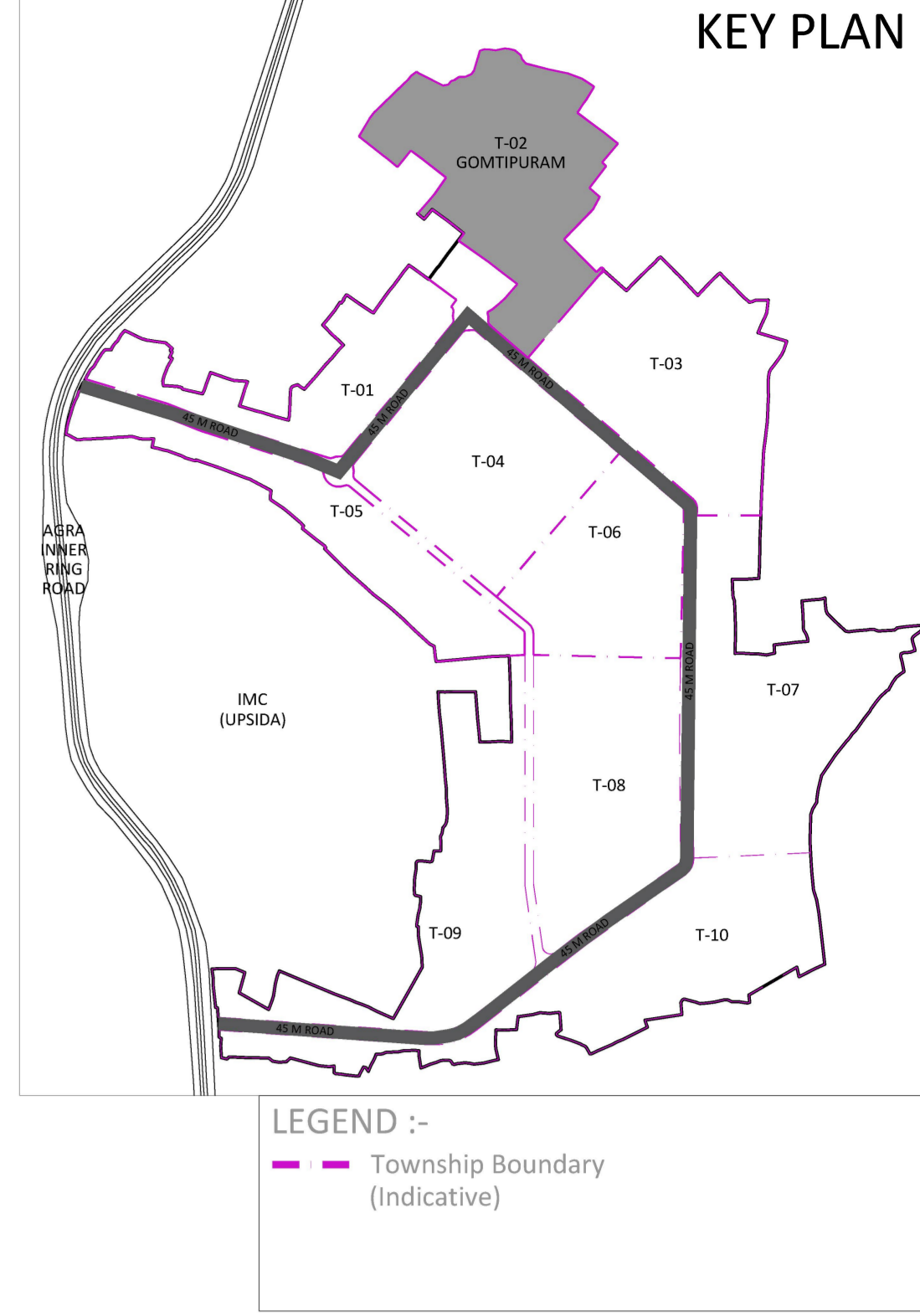


Township - 2 (Gomtipuram)			
क्र०सं	खसरा सं० (रहनकली)	अधिग्रहित रकवा खतोनी के अनुसार (है०) मे	टाउनशिप के अंतर्गत प्रस्तावित रकवा (है०) मे
1	23	0.4960	0.4960
2	24	0.3110	0.3110
3	25	0.2420	0.2420
4	26	0.4840	0.4840
5	27	0.2650	0.2650
6	28	0.4260	0.4260
7	29	0.4730	0.4730
8	30	0.3340	0.3340
9	31	0.5530	0.5530
10	32	0.5190	0.5190
11	33	0.3570	0.3570
12	34	0.3100	0.3100
13	35	0.3400	0.3400
14	36	0.3510	0.3510
15	41	1.2330	1.2330
16	43	0.6570	0.6570
17	44	2.2760	2.2760
18	46	2.4114	2.4114
19	47	0.8380	0.8380
20	48 (मि)	0.0120	0.0120
21	51	0.1645	0.1645
22	52	0.1650	0.1650
23	53	0.7400	0.7400
24	54	1.0630	1.0630
25	55	1.6740	1.6740
26	56	0.2510	0.2510
27	57	1.1730	1.1730
28	58	2.9500	2.9500
29	75	0.2100	0.2100
30	76	0.2040	0.2040
31	77	0.1930	0.1930
32	78	0.2590	0.2590
33	79	0.0860	0.0860
34	80	0.7830	0.7830

35	81	1.2590	1.2590
36	82	0.5620	0.5620
37	84	0.1130	0.1130
38	85	0.9560	0.9560
39	87	0.2990	0.2990
40	88	1.5390	1.5390
41	89	0.1560	0.1560
42	90	0.1500	0.1500
43	91	0.1500	0.1500
44	93	2.6790	2.6790
45	94	1.7930	1.7930
46	95	0.6040	0.6040
47	97	0.2590	0.2590
48	98	0.2880	0.2880
49	99	3.2078	3.2078
50	102	0.6310	0.6310
51	104	1.7186	1.7186
52	105	0.1035	0.1035
53	281	0.2190	0.1824
54	282	2.8570	1.1476
55	287	0.6600	0.1861
56	289	0.6880	0.6880
57	290	0.6630	0.6630
58	291	0.6220	0.6220
59	292	0.6220	0.6220
60	293	1.4750	1.4750
61	294	0.4550	0.4550
62	295	0.6710	0.6710
63	304	0.5420	0.1294
64	305	1.4040	0.1589
<b>योग (क)</b>		<b>50.1498</b>	<b>46.2722</b>

Township - 2- (Gomtipuram) : ग्राम - समाज			
क्र०सं	खसरा सं०	अधिग्रहित रकवा खतोनी के अनुसार (है०) मे	टाउनशिप के अंतर्गत प्रस्तावित रकवा (है०) मे
1	42	0.0520	0.0520
2	45	0.0690	0.0690
3	48	0.0350	0.0350
4	49	0.6110	0.2835
5	50	0.0670	0.0670
6	83	0.0750	0.0750
7	86	0.1670	0.1012
8	92	0.0460	0.0460
9	96	0.0440	0.0440
10	103	0.0520	0.0520
11	106	0.0640	0.0640
12	108	0.0380	0.0380
13	109	0.0230	0.0230
14	288	0.1250	0.0834
<b>योग (ख)</b>		<b>1.4680</b>	<b>1.0331</b>
<b>कुल योग (क) + (ख)</b>			<b>47.3053</b>



- NOTE -
- MINIMUM 7.5 METER FRONT SETBACK WILL BE MANDATORY FOR ALL PLOTS ABUTTING ON 45 METER WIDE ROAD.
  - FOR REMAINING PLOTS, SETBACK SHOULD BE AS PER PREVAILING BUILDING BYELAWS

**Agra Development Authority ADA**  
Ratan Muni Road, Jaipur House Colony  
Agra, Uttar Pradesh - 282010

**DFD Consultants Pvt. Ltd**  
501, B-9, I.T.L Twin Towers, Netaji Subhash Place, Pitampura, New Delhi-110034  
Phone: 011-47400500 (100 lines) Fax: 011-47400555

**AUTHORIZED SIGNATORY**  
Snehal Milind Jagdale Surve  
Snehal Milind Jagdale Surve (Team Leader)

**PROJECT TITLE:** PROPOSED LAYOUT PLAN OF GOMTIPURAM TOWNSHIP ON KHASRA NO. (23-36, 41-58, 48(मि), 75-99, 102-106, 108-109, 281-282, 287-295, 304-305) OF VILLAGE RAHANKALAN, AGRA, UTTAR PRADESH

**DRAWING TITLE:** PROPOSED LAYOUT SUPERIMPOSED WITH CADASTRAL MAP

**SHEET NO. : 2/8**

**ARCHITECT AND URBAN PLANNER**

**SAHIL KATYAL** (Architect & Urban Planner)  
**AKSHAY GAUR** (Architect & Urban Planner)

**SCALE:** 0 25 50 100 Meters

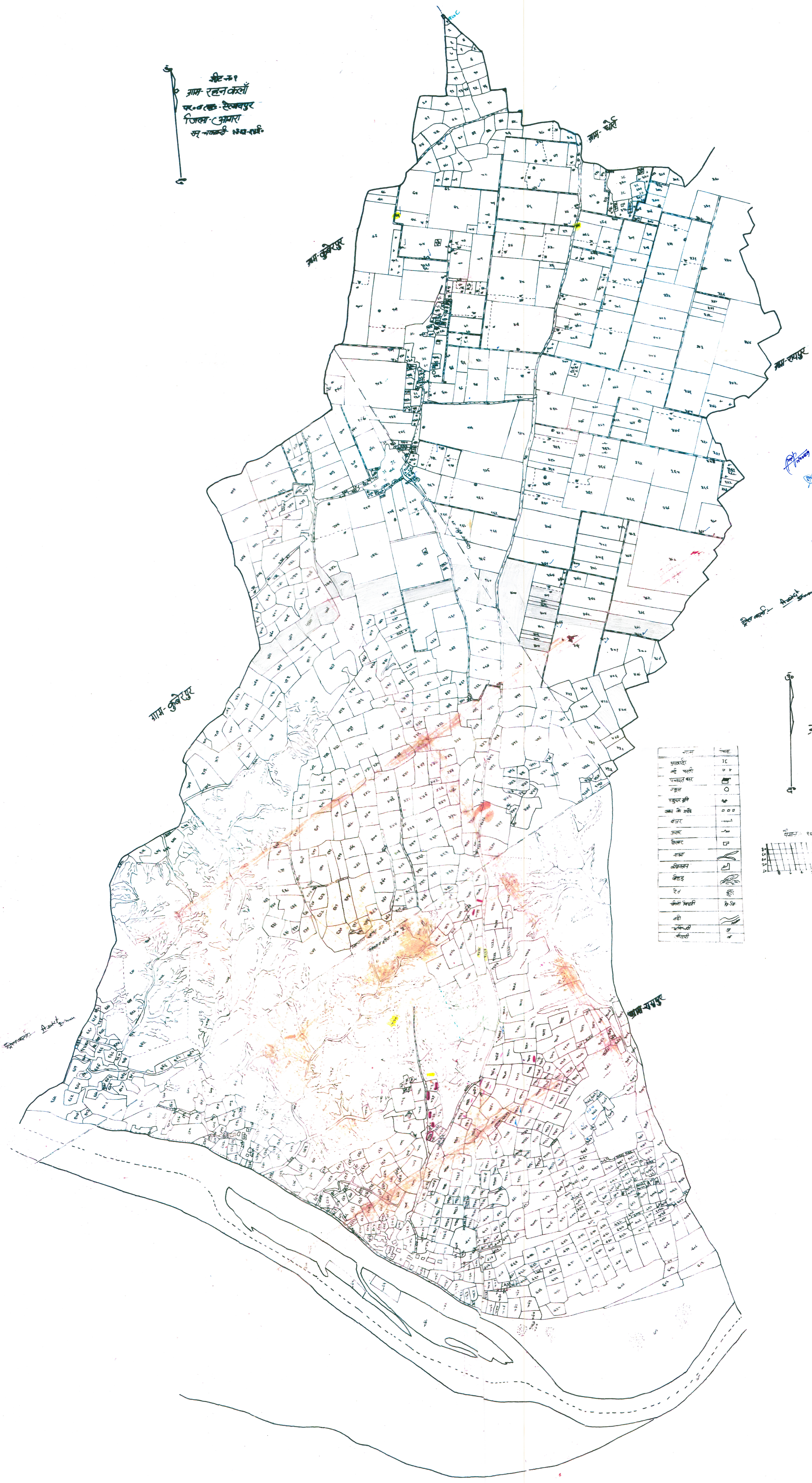
**DRAFTSMAN:** J.E. A.E.

**SECRETARY:** T.P.

**VICE CHAIRMAN:** N.A.



शीट-नं० १  
 ग्राम-रहनकली  
 तहसील-रेवकपुर  
 जिला-अमरा  
 म.प्र. ४७-१७३



[Blue Stamp]  
 [Red Stamp]  
 [Blue Stamp]  
 [Red Stamp]

शीट-नं० ३  
 ग्राम-रहनकली

नाम	चिह्न
झाकलिया	IE
जमी पतली	□ □ □
पन्नादाई बर	■
नकुल	○
रखपुर झील	⊙
जमी के गडदे	□ □ □ □
बाँस	—
जंगल	□
नाका	—
किसान	—
कौट	—
रेल	—
जिला बरहरी	—
नदी	—
चमकली	—
मैलसी	—

